

2019 NORTH vs SOUTH Indoor Match

Date: Friday 16 August – Sunday 18 August 2019

Venue: Keene Range, Halford Place, end of Jackson Street, Petone
25 yard Range

Weekend Programme:

Friday 5:00 -7:30 pm Keene Range open for Practice (all shooters)
8:00 pm Official Welcome, Team Introductions, Supper

Saturday North/South Match
All Shooters 1x single card – 1x double card - 1x single card
6:30 am Range Opens
7:00 – 8:15 am Practice (No further practices during the day)
8:30 am Junior and Veteran Teams Matches
11:15 am Womens Team Match
1:00 pm Mens Team Match
2:50 pm Open Team Match
Times are approximate only, so please be on time for your match

Sunday New Zealand Teams Matches
NZ Junior 1x single – 1x double
NZ Veteran 1x single – 1x double
NZ Women 1x single – 1x double
NZ Open 2x double

7:00 am Range opens
7:30 – 8:15 am Practice (No further practices during the day)
8:30 am Commence NZ Teams Shooting as follows
NZ Junior/Veterans Squads, 1, 2 & 5, 6
NZ Women Squads 3 & 7
NZ Men Squads 4 & 8
NZ Open Squads 9, 10, 11, 12

Derby Match

All Shooters 1x single – 1x double (To be confirmed)

12:50 pm Derby Match Commences

6:00 pm **Photos** - Petone Workingmen's Club, 47 Udy St, Petone
Please be on time. Payment at time photos are taken, \$27 per photo.

7:30 pm **Dinner at Petone Workingmen' Club**
Pre dinner drinks available (at own cost)
Minimum age limits required. ID may be requested
Dinner and presentations
Don't forget your Dinner Ticket **(No ticket no entry)**

2019 NORTH vs SOUTH Indoor Match

Friday 16 August – Sunday 18 August 2019

Congratulations on your selection for the 2019 North vs South match. You will already have been advised of the team(s) for which you have been selected. Note that shooters named as Reserves travel with their teams and shoot, while those On Call do not travel unless advised that they are needed.

If for any reason, you are no longer available for the team(s) you MUST contact the TSNZ Office URGENTLY so that replacement shooters can be advised.

Host Association

The North vs South Match will this year be hosted by Target Shooting Hutt Valley, who have compiled the attached information form.

Please ensure the SHOOTERS INFORMATION FORM is completed and returned as per the instructions as soon as possible but no later than 30 July 2019.

Shooting Venue

Keene Range, Halford Place, east end of Jackson Street, Petone. The rifle storage area will be the Fiji Association Clubrooms between the Vintage Car Club and the Keene Range. The Keene Range will be used only for those teams shooting. You may carry your rifle case to the Keene Range. You will be frequently reminded to pack your rifles as soon as you finish shooting in your team to allow the next team to prepare.

Accommodation

A suggested list of accommodation is attached, these 8 options are the ones to which TS Hutt Valley will provide transport. It is up to the individuals to arrange their own accommodation bookings.

Transportation and Airport Collection

TS Hutt Valley has arranged transportation from the Airport to any of the 8 accommodation options as suggested, providing we receive all the flight information, ie date, flight number and time of arrival. Transportation of you and your gear from your accommodation to the Range will be provided by TS Hutt Valley and you will be advised further regarding this at the information evening on the Friday night.

Those who are staying anywhere other than the 8 listed options are responsible for their own transport.

Dinner and Prizegiving

Team photos (at 6pm) and the dinner (at 7.30pm) will be held at Petone Workingmen's Club 47 Udy Street, Petone on the Sunday evening. Transportation will be arranged for those needing it and you will be advised regarding this at the information evening on the Friday night.

Please note – the dinner is a formal occasion and men will be required to wear a jacket and tie, the ladies suitable evening attire.

Information for All Shooters in the North vs South Match

1. **When selected for the team** - please return your travel details as soon as possible, even if you are arriving by your own transport and don't need to be met. The more information the Host Association has, the easier the job will be. **Make sure you state whether you are left or right handed.**
2. **Travelling on domestic airlines** – advise the airline in advance that you are travelling with a firearm and ammunition. Ammunition and your bolt should be carried separately from your rifle. We suggest you wrap your ammunition in a secure box and pack it in your sports bag, with your bolt, which must be checked in with your other luggage. The rifle case could then be taped across the hinges/locks. Make sure the rifle is securely packed, as airlines aren't as careful with them as you are.
3. **The team introduction and opening** on the Friday night is an integral part of the whole weekend. Please make sure that your travel arrangements allow you to attend. If there is a genuine reason why you can't attend the introduction, you must let your team Manager know in advance so he/she can put in your apology.
4. **A black blazer or jacket** and tie will be needed for the photographs on the Sunday night. You may be able to borrow from another shooter on the night but you can't borrow a blazer with the NZ emblem on it unless you have been in the New Zealand team at some stage.
Attendance at the photograph session is compulsory. Please do not be late. Dress code for the dinner is semi formal; tie and light coloured shirt expected for men (no jeans); for women any skirts/dresses worn are expected to be of a length that is suitable when seated in photographs.
5. **Shooting** – Practice will be available on the Friday late afternoon, early evening. Practice will be available Saturday morning from 7am. Please read the timetable you are given and make sure you allow plenty of time to prepare. The mound draw will be done before you arrive so you can practice on the mound you will shoot on. Please take note of the entry and exit to the mound on the wall by the squad cards. Rifles will only be allowed in the Keene Range for those teams shooting. Time will be available to bring your gear into the Keene Range. **Manawatu Shooting mats are available for use at the range.**
6. **The Inter Island competition** is 10, 20, 10 shot on our standard targets. Make yourself aware of any special range conditions that could be announced at the Friday night briefing (another reason to attend). The range calls could be different to what you are used to, so be prepared. Check your targets for marking or adding errors when you have shot. (Remember a shot that has already been tested can't be retested.) Any queries on the marking should be brought to the attention of your Manager, who will forward your protest to the Chief Marker. The official protest time ends 20 minutes after the final team score for your match has been posted.
7. **On the Sunday** match conditions may vary. All matches on the Sunday will be shot on TSNZ cards. The shooters who did not make the NZ teams will have a separate **Derby Team** competition **in which all are expected to participate.** The match conditions may vary from year to year, and will be notified by the TSNZ Executive before the North vs South weekend.

Inter-Island Match
16 -18 August 2019
Shooters Information FORM



Name:

Home
Address:

Phone No:

Cellphone No:

Email:

I have been selected for the following teams:

☐
☐
☐
☐

Men

Open

Junior

Manager or TSNZ Exec member

☐
☐

Women

Veteran

Representing the

☐
☐

South Island

North Island

I shoot:

☐
☐

Right-handed

Left-handed

☐

I will be going to the Sunday night dinner and presentation

and require dinner ticket(s) **Cost-\$40** (to be paid for before noon Saturday)

Payment can be made by online Banking. Bank details: 01-0542-0149264-00

Details for our Statement: Particulars-----Code-----Reference

☐

Online Payment Made

Your Name-----N-S-----TSNZ #

☐

Special dietary requirements - please specify below

Transport:

☐

Own

☐

Other

☐

Passenger with

☐

Air, Arriving Wellington flight #

arriving at:

time

☐

Air, Departing Wellington flight #

departing at:

time

☐

I will require transport to and from my accommodation and the Range

☐

I am staying at

Please complete and post to
or email to

TSHV, PO Box 38633, Lower Hutt 5045

edneycollin@gmail.com

Before 30 July 2019

This personal information shall remain confidential and within TS Hutt Valley until completion of the event,

Inter Island Match Format

Inter Island Match Saturday:

Open	20 + 2 emergencies
Women	15 + 2 emergencies
Men	15 + 2 emergencies
Junior	10 + 2 emergencies
Veteran	10 + 2 emergencies

The course of fire will be 1 X 10, 1 X 20, 1 X 10 Shot Matches.

Mound positions will be drawn taking into account shooters who are in more than one Team and who have to shoot in consecutive Matches. Left handers may shoot together on one platform if numbers are sufficient.

Targets will be marked according to TSNZ Rules and the marked targets will be given out to the shooters.

Any Protests re scores or any other matter will only come to the markers or the Range committee through the respective Managers. The only shots that will be challenged are those that have not been tested already, and any obvious mistakes.

Protest time will cease 20 Minutes after the Final Team Score has been posted.

New Zealand Teams Sunday:

Open	22 Team Members
Women	12 Team Members
Men	12 Team Members
Junior	12 Team Members
Veteran	12 Team Members

Teams will be selected from the results of the relevant Inter Island match on Saturday in seeded order.

The top scorer from those matches will be the Captain of their respective New Zealand Team.

The Manager of the New Zealand Teams, will be the Manager of the winning Island Team.

The International match will be the Home Counties Vs New Zealand.

The match will be shot on TSNZ 25 yard Targets.

The course of fire for the Open Team will be 2 X 20 Shot Matches.

The Team score will be the top 20 scores

The course of fire for the Women, Men, Junior & Veterans Team will be 1 X 10 Shot and 1 X 20 Shot Match.

The Team score will be the top 10 scores

All these Matches will be shot under TSNZ Rules and Conditions.

The NZ targets will **NOT** be handed out but will be retained by the TSNZ Liaison Officer. The respective managers will be the only people to view the shot targets and any protests will come through them.

NOTES FOR MANAGERS

Friday night introductions: Proposed format

TSNZ President will introduce the Team Managers who will then come forward and ask the full team to come up as one.

They will then introduce the Captain of the team and ask them to hand out the date bars as the Manager introduces the rest of the team (This way the introductions will take the minimum amount of time)

The Squad cards will be posted on the Friday afternoon before the practice begins so the shooters can practice on the mound they will be shooting on.

After the completion of each Competition we will endeavour to get the Mound draw out for the shoot on the Sunday.

Those shooters who are not representing New Zealand on the Sunday will be seeded into teams for the Derby Match.

The course of fire is 1 X 10, 1 X 20 Shot Match (to be confirmed)

The four top seeds will be the Captains of their various Teams and it will be their responsibility to consult their team Members and come up with a suitable name for their team. The squads will be made up of alternate team members starting from the lowest seed and finishing with the top seeded shooters in the last squad taking into account the left-handers.

Please make your shooters aware of the protest times especially if they are in more than one Team.

Any problems on the day please come and see me or the Host and we will do our best to iron them out.

Bruce Marchant
TSNZ Liaison



Keene Range

Marking Room

Prep

Lunch/ Tea
Results
Shop

Halford Place



Motels in area of Keene Range

Foreshore Motor Lodge

5 Nelson Street, Petone

04 939 360

\$145-00



Ava Lodge

42/44 Cuba Street, Petone

04 891 0203

\$165-00



B-K's Esplanade

189 The Esplanade, Petone

04 589 7501

\$155-00

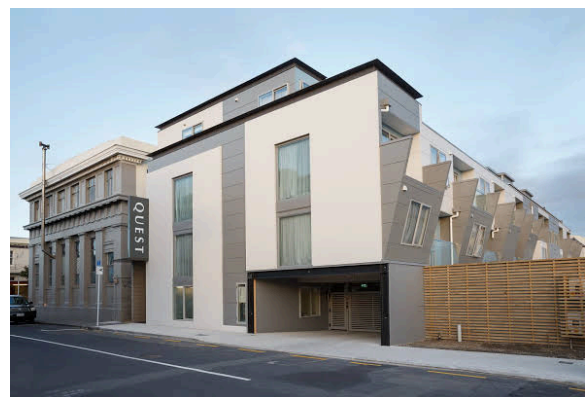


Quest Petone

42 Richmond St, Petone

04 2821680

\$135-00



PTO

Settlers Motor Lodge

85 Hutt Road, Petone
04 939 4088
\$155-00



83 by the Sea

83 The Esplanade, Petone
04 569 8121



Dupont Motels

95 Hutt Road, Petone
04 569 3799
\$135-00



Midway Pacifica Lodge

89 Hutt Road
04 569 3735

